



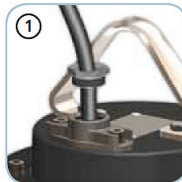
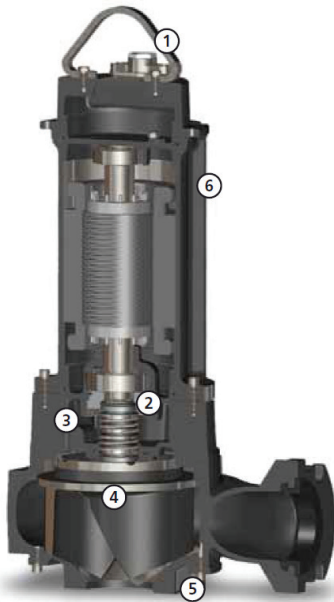
A HIGHER LEVEL OF QUALITY

Submersible Multi-channel open impeller drainage pump.

Designed for professional and industrial applications such as stormwater and waste water treatment plants.

General Specifications

- 1.8kW
- 2.5hp
- 240V without float switch
- max flow 1260L/m
- Outlet DN 65mm



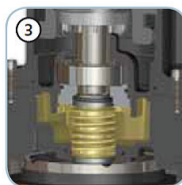
Cable gland

Cable gland system to guarantee perfect water-tightness. The GAS thread ring-nut can be removed to fix a rigid or flexible duct to the cable gland to protect the power supply cable.



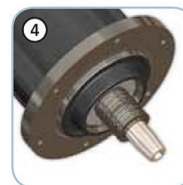
Mechanical seals

Two silicon carbide (2SiC) mechanical seals in oil sump.



Oil sump

Large oil sump to guarantee longer mechanical seal lifetime. A threaded flange can be easily removed to replace the mechanical seals.



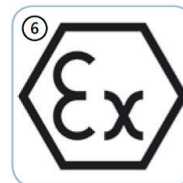
Drive shaft

A special bronze bush coupled to the tapered shaft enables quick and easy impeller clearance adjustment, thus maintaining the pump's hydraulic specifications.



Anti-clogging system

The special design of the hydraulic part ensures the expulsion of suspended solids and prevents fouling of the impeller.



EX

Models available on request with ATEX certification, suitable for installation in the presence of potentially explosive gases, powders and liquids.

CE 0496 Ex II 2GD Ex db k c IIB T5 Ex tb IIIC T100°C IP68



www.whiteint.com.au
www.whiteint.co.nz



water solutions

Data sheet

DRN 250/2/65 A1DM5

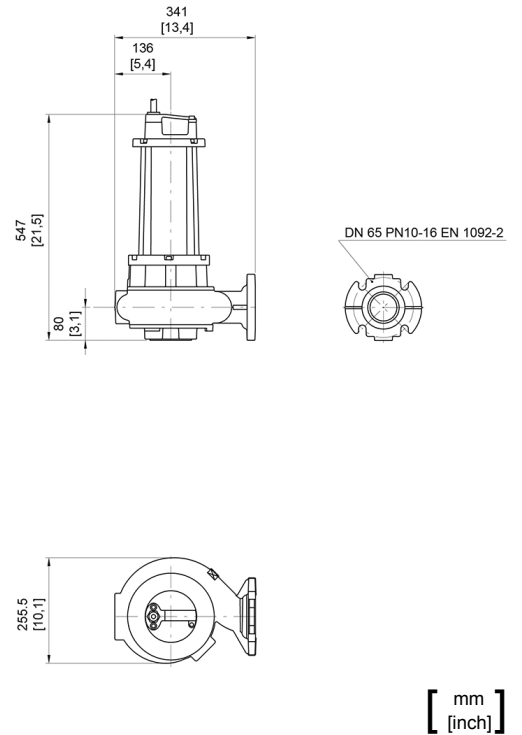
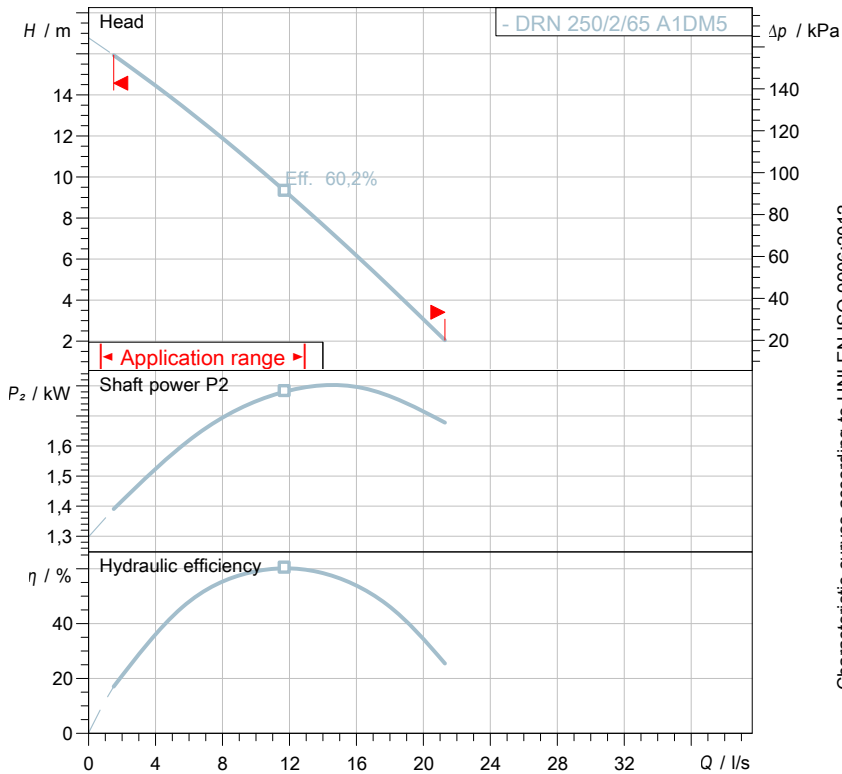


N

series

Technical specification

1~ 50 Hz



Pump

Series	N series
Pump name	DRN 250/2/65 A1DM5
Configuration	NGDBB51023S00EX
Standard	ATEX 94/9/CE
ATEX mark	II 2 GD Ex d kc tD A21 IIB T5 T100°C IP68 X

Operating limits (standard pumps)

Max. ambient temperature	40 °C
Max. density treated liquid	1100 kg/m ³
Max. immersion depth	30 m
pH treated liquid	6 ÷ 14
Max. start per hour (equally distributed)	30
Wet/dry use	WET
Max. acoustic pressure level	70 dB
Operating mode	S1 - Continuous use

Motor data

Rated voltage	230 V
Frequency	50 Hz
Motor phases	1~
Number of poles	2
Rated power P2	1,8 kW
Incoming power P1	2,8 kW
Rated current	12,5 A
rpm	2792 1/min
Efficiency	69,0 %
cos φ	0,96
Rated torque	6,2 Nm
Start	
Degree of protection	IP 68
Insulation class	H

Construction materials

Case	Cast iron EN-GJL 250
Shaft	Stainless steel - AISI 431
Hydraulic	Cast iron EN-GJL 250
Impeller	Cast iron EN-GJL 250
Painting/Coating	Bi-epoxy 150 μm
Screws	Stainless steel - Class A2-70
Gaskets	Viton
Cooling jacket (if present)	Carbon steel

Hydraulic

Type	DR (Multi-channel open)
Free passage	40 mm
Impeller type	Multi channel impeller
Max. hydraulic efficiency	60,2 %
Suction	DN 65 EN 1092-2
Discharge	DN 65 EN 1092-2
Curve tolerance	UNI EN ISO 9906:2012

Construction features

Cooling system	No cooling jacket
Main cable	4G1.5+2x0.75
Control cable	-
Cable length	10 mt
Mechanical seals	2 in silicon carbide
Additional drilling	-
Weight*	56 kg
Electrical variant	Thermal protection, Starting Capacitor and Running Capacitor

* cable's weight not included



water solutions

Data sheet DRN 250/2/65 A1DM5

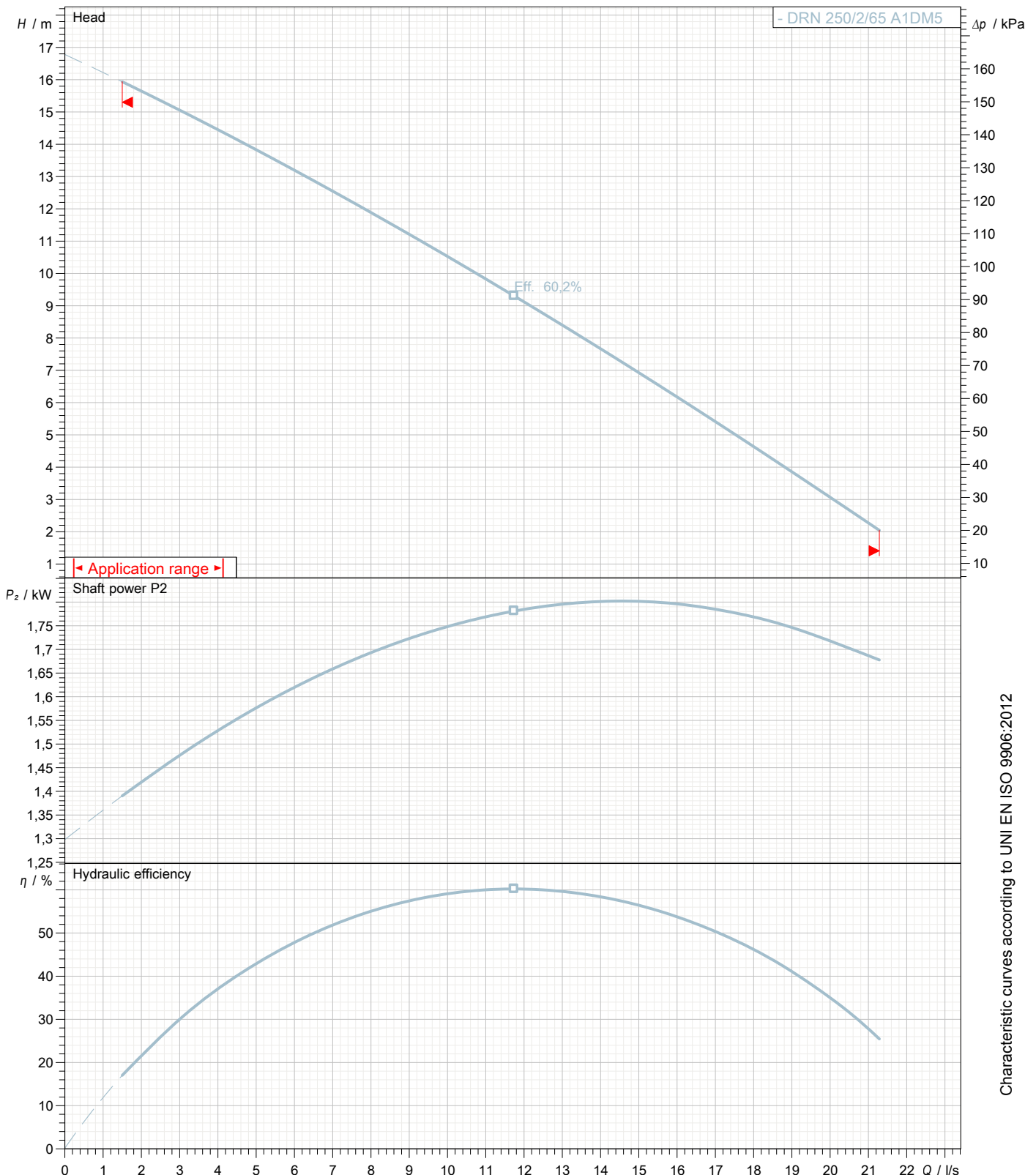


N series

Pump performance curves

1~ 50 Hz

Hydraulic type DR (Multi-channel open)		Impeller type Multi channel impeller		Free passage 40 mm	Discharge DN 65	Suction DN 65
DUTY POINT						
Flow	Head	Shaft power P2	Hydraulic efficiency	Density 998,3 kg/m ³	Viscosity 1,005 mm ² /s	



Characteristic curves according to UNI EN ISO 9906:2012



water solutions

Data sheet DRN 250/2/65 A1DM5



N

series

Dimensional drawing

1~ 50 Hz

Installation type Installation with bottom coupling device - Vertical outlet

WET/DRY use: WET

Discharge: DN 65 EN 1092-2

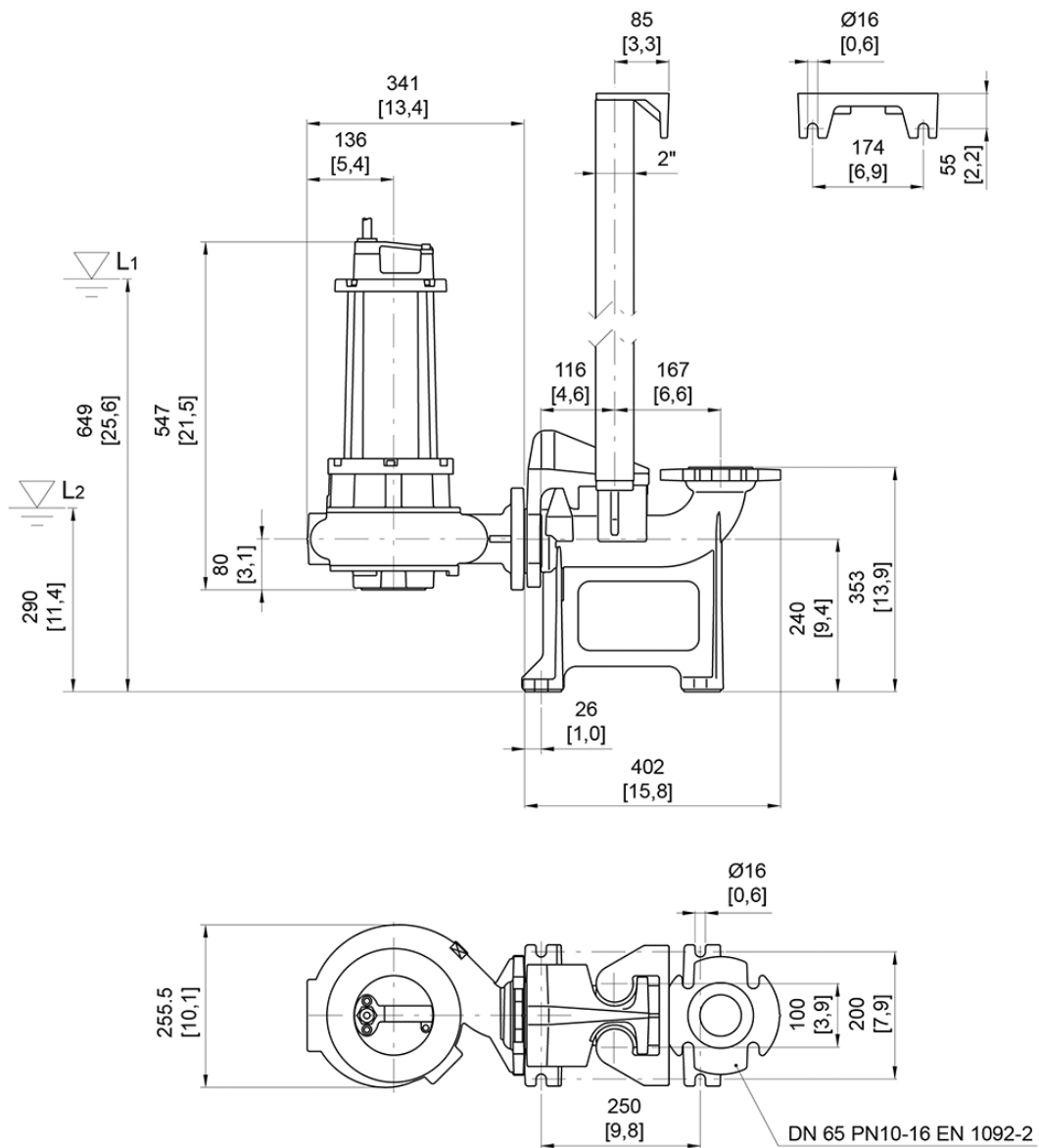
Suction: DN 65 EN 1092-2

Pressure rating (suction/discharge): PN 6/PN 10

Accessory * : DAC 65/65V+KAF 116-2" EN (P)

Accessory code * : 9001.031

* Accessory must be ordered separately



L1: Minimum operating level for continuous use

L2: Minimum operating level for discontinuous use (only "WET" version)

[mm]
[inch]